

Statement of Financial Position

For year ending August 31, 2008 (unaudited)

Assets	2008	2007
Current assets		
Cash	1,531,159	1,479,516
Short-term investments	—	6,214
Accounts receivable	119,089	152,569
Prepaid expenses	34,856	13,632
	1,685,104	1,651,931
Marketable securities	319,232	524,925
Capital assets	305,425	257,029
	2,309,761	2,433,885
Liabilities		
Current liabilities		
Accounts payable & accrued liabilities	286,706	181,733
Due to National Office	372,310	561,612
Deferred revenue	111,326	123,082
	770,342	866,427
Deferred capital contributions	115,301	124,597
Deferred lease benefit	75,917	89,720
Long-term liability		
Loan from National Office	—	125,000
	961,560	1,205,744
Net assets		
Invested in capital assets	190,124	132,432
Unrestricted	1,158,077	1,095,709
	1,348,201	1,228,141
	2,309,761	2,433,885

Client Services

Volunteer Legal Advocacy Program (VLAP)

Ron Jones has been a lay volunteer since 2001 in our one-of-a-kind Volunteer Legal Advocacy Program. VLAP involves lay advocates and volunteer lawyers



who advise and support on issues such as Canadian Pension Plan and long-term disability and provide legal assistance to those not eligible for legal aid. Pro bono lawyers serve 8 of 10 MS Society chapters.

Education Workshops

Volunteers from around the province took part in our first two-day workshop, "Making a Difference Today," devoted to the development of advocacy skills. Since then, many volunteers have increased awareness among elected officials about issues such as accessibility of MS drugs and ensuring income security for people with intermittent disabilities.

"The Questions You Have... Answered," an educational workshop presented by Dr. Rosalind Kalb attracted nearly 300 people.



Equipment Provision Program

"Thank you again. As you can see, you have opened up a lot of doors for me that I thought were permanently closed."

– Sharon Cobey, who was able to dance at her son's wedding because of equipment provided by the MS Society.

Research

The Multiple Sclerosis Society of Canada Research Chair at the University of British Columbia, held by Dr. Rieckmann, anchors MS research in BC and Canada.

Dr. Rieckmann is a member of our new initiative, the endMS Research and Training Network, which will encourage collaboration among researchers while attracting and developing new talent to the MS research community.



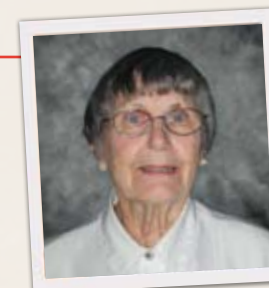
Fundraising

- **MS Walks** in 23 communities with 6,277 walkers raising \$1.61 million.
- **RONA MS Bike Tours** in 4 communities with 1,247 cyclists raising \$771,000.
- **Carnation Campaign** in 15 communities raised \$88,600 during May MS Awareness month.
- **Ski, Swim, Golf** fundraising events and numerous third party fundraisers supported our mission throughout BC & Yukon.



Our Amazing Volunteers

In 2008, within the lower mainland, fundraising event and office volunteers contributed 5,777 hours of time. Valued at a low \$10 per hour, this contribution equals \$57,770. This is only a limited example, many more volunteers contribute to the Society in a wide range of capacities in chapters throughout the division.



Olive Merrick of Comox, awarded a Certificate of Exceptional Achievement for 13 years of volunteer support.

For year ending August 31, 2008 (unaudited)

Revenue	2008	2007
Donations & special fundraising projects	2,927,954	2,378,478
Direct mail & corporate campaign	502,856	483,491
Grants	288,116	277,317
United Way	99,271	114,697
Miscellaneous income	67,338	34,896
Investment income	36,767	69,962
endMS research network	10,000	371,600
Amortization of deferred capital contributions	9,296	15,162
Memberships	9,290	7,670
	3,950,888	3,753,273
Expenditures		
Funds remitted to National Office		
• Research	1,239,591	1,056,601
• endMS research network	10,000	371,600
• Programs & services	203,556	161,970
Client services	863,064	859,665
Equipment Provision Program	148,867	118,785
Public education	308,628	285,004
Volunteer resources	229,891	214,760
Government & Community Relations	185,285	93,514
MS Clinics	47,006	48,611
	3,235,888	3,210,510
Support Services		
• Administration	415,244	324,306
• Fundraising	159,696	143,954
	574,940	468,260
	3,810,828	3,678,770
Excess of expenditures over revenue	140,060	74,503



Message from the BC & Yukon Division President and Chair

As 2008 draws to a close, we are faced with many uncertainties and with some exciting possibilities if we can maintain our vision and keep the tremendous momentum gathered over the past year.



You may notice that we are increasingly referring to the British Columbia & Yukon Division in acknowledgement of the area we serve.

Outreach and development with the Yukon Territory advanced considerably this year with our second outreach visit to Whitehorse. The Yukon community reciprocated by holding their first ever MS Walk fundraising event.

While the economy has slowed world-wide, supporters continue to demonstrate that ending MS is a priority when they give. This commitment is illustrated by over 8,000 people in BC & Yukon who took part in fundraising events in 2007-08 which included our share of the bold \$60 million endMS initiative. We will continue to count on and grow that good will and hope.

The Division Board of Directors has established working groups to evaluate the services provision in four key areas: information/education, the Peer Support Program, social/recreation programs and the Equipment Provision Program. This process will help us continue to advance the quality of support and services provided.

We thank you all for your contribution in creating the enormous amount of hope and resources it will take to end MS so that people can be cured, the negative effects countered, and the disease made preventable. It really is time!

Janet Palm

Janet Palm
President

Gerry Bramhill

Gerry Bramhill
Chair

National Award Recipient



John Alexander Media Award

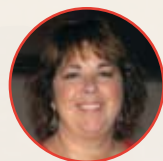
Larry Read
For CFJC TV story about "The Faces of MS."

Division Award Recipients



President's Award

Claudette Friesen
"MS has had a profound effect on my family. Three siblings, my uncle, two nieces, cousins and I have MS. My goal is to see every person with MS and their families given the support they need."



Opal Caregiver Award

Belinda Neumann
"The MS Society helped my Mom in so many ways and continues to help our family. We receive great satisfaction as volunteers because we want to bring an end to MS."



Award of Merit

(Member)
Genevieve Sigalet



Award of Merit

(Non-Member)
Kent Wong & Sandy Wiseman

Certificates of Exceptional Achievement

- **Business or Corporation**
Scotiabank, BC & Yukon Region
- **Volunteer**
Olive Merrick



Our Mission

To be a leader in finding a cure for multiple sclerosis and enabling people affected by MS to enhance their quality of life.



Board of Directors 2007-2008

Gerry Bramhill, Lynn Hunter, Iain Ball, Gordon Skene, Jan Petrar, John Hadley, Mike Hennessy, Marilyn Lenzen, Harmony Poisson, Dan Carlson, John Folka, Mary Ellen Tabor

British Columbia Chapters

South Vancouver Island

Victoria250.388.6496
Cowichan Valley.....250.748.7010

Central Island.....250.754.6321

Fraser Valley.....604.393.7122

Kamloops & Area.....250.314.0773

Lower Mainland.....604.689.3144

North Vancouver Island.....250.286.0999

Okanagan.....250.762.5850

Prince George.....250.564.7074

South Okanagan & Similkameen...250.493.6564

West Kootenay.....250.229.4994

BC & Yukon Division Office

1501-4330 Kingsway, Burnaby, BC V5H 4G7

t: 604.689.3144 or 1.800.268.7582

f: 604.689.0377 e: info.bc@mssociety.ca

www.mssociety.ca/bc

Charitable Number: 10774-6174-RR0002

Annual Report 2007-2008

