

Thumbs Up!



For Safe & Accessible Communities



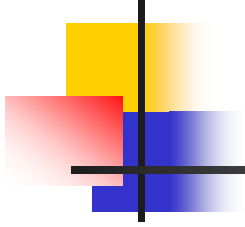
elgin
st. thomas
health unit



- be active everyday
- make your home a safe place
- walk safely
- use your medication wisely

Elgin Safety Team for Adults

631-9900



What is Thumbs Up?



Encourages, Recognizes and Rewards

- Businesses and services that are physically accessible, safe and user-friendly.

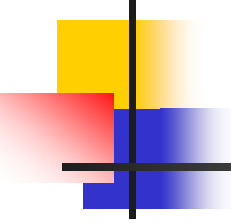


Goal & Objective

- To increase the safety and accessibility of businesses in our community.
- To improve the quality of life of our growing elderly population and the disabled.
- To reduce the prevalence of falls sustained by elderly in Elgin County.



Why are accessibility and safety important?

- 
-
- 25 % of the population in Elgin County have difficulty hearing, seeing, communicating, walking, climbing stairs
 - Increases to 52 % for those 70 to 79 years
 - 15% of the residents of St. Thomas are 65+
 - Canadian population 65+ will increase from 13% to 21% by 2011.



Imagine!!!!!!!!!!!!



How did Thumbs Up get started?



Thumbs Up Today

- Train volunteers
- Checklist
- Thumbs Up decal and certificate
- Thumps Up places
- Helpful Hints
- Website: www.thumbsupstthomas.com
- Media support





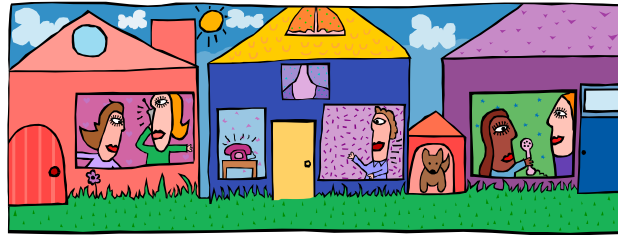
Successes

- Awarded a 2005 Civic Award by City of St. Thomas
- Requested by many other communities in Ontario
- 30 Thumbs Up places in St. Thomas



Future?

- Expand the program
- Envision accessible communities everywhere
- Ontarians with Disabilities Act to be fully implemented by 2025





Ontarians with Disabilities Act

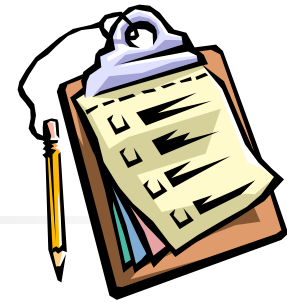
- Public 2001
- Private 2005

How Can You Help?

- Volunteers are the most important part of the program to complete checklists, talk to business owners and deliver decals/certificates



Volunteers



- Sign up or call Kathy Nesbitt
- Trained in a half day session
- Complete checklist with experienced volunteer
- Complete checklists as time allows
- Completed checklists are given to Access Awareness Committee
- Decals/certificates delivered to business owners
- New places added to websites



Thumbs Up Checklist

Name: _____ Date: _____ Time: _____

Address: _____

Code: <input checked="" type="checkbox"/> YES <input type="checkbox"/> N/A – Not Applicable
<input type="checkbox"/> NO



Parking Lot and Sidewalks

- free of large cracks, holes, uneven surfaces and/or dangers clearly identified with contrast paint, a sign or pylon.
- walking paths clear of obstacles such as portable signs, shopping carts, etc.
- well lit
- disabled spaces are clear, accessible and have a vertical sign.
- clear of ice and snow during the winter



Entrances & Exits

Must have one of these:

- self-opening doors
- disabled push button
- doorbell

Entrance Mats are:

- clean and free of water, snow
or ice build up
- non skid and lay flat



Entrances & Exits

Entrances have:

- clear opening of no less than 81 cm**
- even surfaces**
- a ramp if stairs present (1.5 m. wide)**
- handrails for ramps and steps ideally on both sides**
- well lit**
- doors that allow customers to see someone coming in or out**



Entrances & Exits

- doors that can be opened easily
(door knobs, weight of door)
- doors that open and close at
safe speed
- glass doors marked at eye level
- phone
- seating in the entrance/exit



Floors and Aisles

- free from slip and trip hazards, e.g. water, ice, broken tiles, uneven surfaces
- wide enough for walkers, wheelchairs and scooters
- free of clutter, e.g. boxes, produce, merchandise, display
- access to exits clear
- well lit



Stairs (indoor / outdoor)

- railings firmly attached**
- both sides extends beyond top & bottom
- well lit**
- edges marked with a contrasting colour, texture or lights**
- not slippery**
- free of obstructions and in good condition**



Public Washrooms

- wheelchair accessible (cubicle 1.5m x 1.5m)
- cubicle door swings outward
- well lit
- equipped with grab bars
- have a family washroom



Shelves, Racks and Displays

- secure & do not move or tip**
- allow you to move around them easily**
- items within reach or assistance available**



Carts and Baskets

- available**
- maintained**
- easy to manage**
- powershopper provided**



Visually Impaired

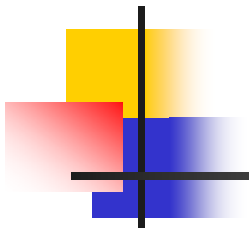
Signage:

- large print**
- braille
- washrooms
- elevator
- exit



Customer Service

courteous customer service



Will receive Thumbs Up decal

General Comments:

Checked by: _____



Questions?

THANK YOU

