

Executive Report

By Sean Foran, Chair, Board of Directors and
Janice Wiggins, Executive Director



The Toronto Chapter saw many changes in 2010 including refocus on program and service delivery, a rejuvenated Board of Directors and a new Executive Director.

We applaud and thank our dedicated staff members Angela Rodriguez and Lynn Laccohee who, as co-acting Executive Directors, ensured operations of the chapter continued smoothly. Additionally, they worked closely with the Board of Directors to fulfill our mission in challenging times. As a result, programs and services offered to those living with MS, their families, along with informal and formal caregivers, continued to be delivered through Toronto Chapter.

Our streamlined funding programs provided much needed equipment and repairs, access to home help, incontinence supplies and air conditioners to make life for those living with MS a little easier. Members of the chapter were active in many ways, such as attending self-help groups, enjoying recreational activity through a health and wellness series and learning more about MS through educational seminars and newsletter publications. A highlight of the

annual Holiday Party featured a dance instructor who taught ballroom dance moves to members at various mobility levels.

Advocating for the rights of persons living with MS has remained a priority for our Chapter through engagement with partners and coalitions to help with systemic and policy issues in Toronto, and with provincial and national counterparts where further impactful decision-making takes place.

The MS Society of Canada, Ontario Division's ongoing financial arrangement with Toronto Chapter gives funding stability in these times of economic uncertainty. United Way Toronto, through their annual grant and targeted workplace donations, plays a major role in our ability to provide valuable, in demand, programs and services to those living with MS and their caregivers. Our commemorative giving program, featuring in memoriam, in honour, weddings, bar and bat mitvahs, was a source of gratefully appreciated support.

We are proud that the Paloma Foundation has generously provided a two-year grant. This special fund, entitled the Children's Leisure Activity Subsidy, is designed to assist families living with MS. In 2010 these funds gave twenty-eight young individuals an opportunity to learn and grow through healthy outlets.

From a corporate perspective, the chapter board is responsible for the oversight and governance of business while professional staff run the operational day to day activities. Our new Executive Director, Janice Wiggins, arrived in June with a keen insight into health charities and the

direct service and business issues facing them. In autumn 2010, board volunteers and staff worked together to develop a strategic plan focusing on the principle that concrete, tangible objectives will continue to move the chapter forward. Using the MS Society's of Canada's Momentum 2015 as a springboard, our chapter carved out ways to accomplish two significant goals: to enhance the quality of life for people affected by MS and increase general awareness of MS issues and the MS Society of Canada, Toronto Chapter.



2010-2011 Board of Directors (back row, from left): Michael Binder, Sandra Montague, Patricia McQuillan, Jo-Anne Howe, Sean Foran; (front row, from left): Krista Corbeil, Sara Azargive, Lia Messina. Not pictured: Christine Nordal and Katharina Wolff.

Finally, our Board of Directors bid fond farewells to Deborah Worrad, Vice Chair, and Ivor Gottschalk, past Treasurer, for their commitment and dedication to the chapter. Ivor was instrumental in guiding our chapter as Treasurer while winning the respect and thanks of members, staff and volunteers alike. Deborah refocused our chapter nominations process to ensure that our board reflects the diverse stakeholders of Toronto with a variety of qualities including people living with MS, connections to MS as well as the necessary professional skills to serve the Chapter. Through a lengthy recruitment and nomination process, we welcomed two new directors, Christine Nordal and

Katharina Wolff. The contributions of board, staff, funders, supporters, and members all reflects the dedication and commitment of the Toronto Chapter as a whole to serving the needs of those living with MS, their families and caregivers. Thank you everyone!

Handwritten signature of Sean Foran.

Sean Foran
Board Chair

Handwritten signature of Janice Wiggins.

Janice Wiggins
Executive Director

The Toronto Chapter is grateful to all of our 2010 donors. Your contributions help provide educational, social and financial programs to individuals and families.

We would also like to thank our guest speaker, Heather Hanwell, who provided a presentation after the AGM on vitamin D and its correlation to multiple sclerosis. Heather provided a comprehensive and engaging talk on what we've learned thus far from studying the vitamin D status in children who are at a high risk of MS.



Financial Report

MS Society of Canada,
Toronto Chapter
Balance Sheet
As at December 31, 2010
(unaudited)

Assets

Current assets

Cash	307,574	235,409	303,539
Accounts receivable	42,928	140,363	890
Prepaid expenses	-	-	1,055

Capital assets - net (note 4)

	4,956	3,258	4,408
--	-------	-------	-------

Liabilities

Current liabilities

Accounts payable and accrued liabilities	4,090	19,816	21,967
Due to other MS Society of Canada offices	38,826	112,143	82,713
Deferred revenue	51,500	7,500	10,000

Net Assets

Unrestricted	261,042	239,571	195,212
--------------	---------	---------	---------

	Dec. 31, 2010 \$	Dec. 31, 2009 \$	Aug. 31, 2009 \$
Current assets			
Cash	307,574	235,409	303,539
Accounts receivable	42,928	140,363	890
Prepaid expenses	-	-	1,055
	350,502	375,772	305,484
Capital assets - net (note 4)	4,956	3,258	4,408
	355,458	379,030	309,892
Liabilities			
Current liabilities			
Accounts payable and accrued liabilities	4,090	19,816	21,967
Due to other MS Society of Canada offices	38,826	112,143	82,713
Deferred revenue	51,500	7,500	10,000
	94,416	139,459	114,680
Net Assets			
Unrestricted	261,042	239,571	195,212
	355,458	379,030	309,892

Approved by the board of directors



Michael Binder, Treasurer



Sean Foran, Chair

MS Society of Canada,
Toronto Chapter
Statement of Revenue
and Expenditures and
Changes in Assets
As at December 31, 2010
(unaudited)

Revenue

Allocation from United Way	138,996	46,336	139,000
Allocation from United Way - Donors' Choice			
Unrestricted	157,477	26,908	129,551
Restricted for research	769	328	4,751
Fundraising	6,009	2,052	-
Donations from individuals and groups			
Unrestricted	53,733	46,261	106,849
Restricted for research	11,814	3,155	2,026
Grants	7,500	10,000	10,700
Membership dues	10,690	2,946	11,404
Investment income	10,789	4,458	-
Miscellaneous	2,720	1,965	2,330

MS Society of Canada, Ontario Division Grant
Bequests

	400,497	144,409	406,611
	336,204	122,256	316,762
	-	-	1,415
	736,701	266,665	724,788
Less: Funds remitted to Ontario Division for programs and services	(24,317)	(8,017)	(24,051)
	712,384	258,648	700,737

Expenditures

Program services

Client services	424,916	152,044	442,876
Public education	132,284	20,561	63,406
Volunteer resources	60,899	19,106	54,348
Social action	33,540	3,734	11,796
Funds remitted to National Office for research	12,583	3,483	16,942
	664,222	198,928	589,368

Support services

Administration	26,691	15,361	44,649
	690,913	214,289	634,017

**Excess (deficiency) of revenue over expenditure:
for the year**

	21,471	44,359	66,720
Unrestricted net assets - Beginning of year	239,571	195,212	128,492
Unrestricted net assets - End of year	261,042	239,571	195,212

	For the twelve months ended Dec. 31, 2010 \$	Four the four months ended Dec. 31, 2009 \$	For the twelve months ended Aug. 31, 2009 \$
Revenue			
Allocation from United Way	138,996	46,336	139,000
Allocation from United Way - Donors' Choice			
Unrestricted	157,477	26,908	129,551
Restricted for research	769	328	4,751
Fundraising	6,009	2,052	-
Donations from individuals and groups			
Unrestricted	53,733	46,261	106,849
Restricted for research	11,814	3,155	2,026
Grants	7,500	10,000	10,700
Membership dues	10,690	2,946	11,404
Investment income	10,789	4,458	-
Miscellaneous	2,720	1,965	2,330
	400,497	144,409	406,611
MS Society of Canada, Ontario Division Grant	336,204	122,256	316,762
Bequests	-	-	1,415
	736,701	266,665	724,788
Less: Funds remitted to Ontario Division for programs and services	(24,317)	(8,017)	(24,051)
	712,384	258,648	700,737
Expenditures			
Program services			
Client services	424,916	152,044	442,876
Public education	132,284	20,561	63,406
Volunteer resources	60,899	19,106	54,348
Social action	33,540	3,734	11,796
Funds remitted to National Office for research	12,583	3,483	16,942
	664,222	198,928	589,368
Support services			
Administration	26,691	15,361	44,649
	690,913	214,289	634,017
Excess (deficiency) of revenue over expenditure: for the year	21,471	44,359	66,720
Unrestricted net assets - Beginning of year	239,571	195,212	128,492
Unrestricted net assets - End of year	261,042	239,571	195,212

Board of Directors for 2010-2011



Sara Azargive
(Vice-chair)



Michael
Binder



Krista
Corbeil



Sean Foran
(Chair)



Jo-Anne
Howe



Patricia
McQuillan
(Vice-chair)



Lia
Messina



Sandra
Montague
(Treasurer)



Christine
Nordal



Katharina
Wolff

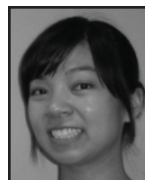
Toronto Chapter Staff



Patricia Cole
Manager, Administration



Julie Crjen
Manager, Communications
(on maternity leave)



Carol Kim
Acting Manager,
Communications



Lynn Laccohee
Manager, Client Services



Angela Rodriguez
Manager, Client Services



Nancy Torrance
Manager, Funding Programs



Janice Wiggins
Executive Director

Services

Education, Information & Referral
Equipment Loans & Equipment Funding
Subsidies for Home Help & Incontinence Supplies
Supportive Counselling & Self Help Groups
Recreation Programs
Volunteer Services
Social Action & Advocacy

MS Society of Canada, Toronto Chapter
175 Bloor St. E. Suite 700, North Tower
Toronto Ontario M4W 3R8
Phone: 416-922-6065 Fax: 416-967-3044
toronto@mssociety.ca www.mssociety.ca/toronto
Charitable Registration No.
107746174RR0001



A United Way Agency
